



*XXIth European days of State Territorial  
Representatives*

*Nuclear Energy and Safety*

Cathy Berx  
Governor of the province of Antwerp (Belgium)  
12th of June 2014

# Nuclear Energy and Safety

Development and implementation of **emergency plans:**

**Experiences** and **expertise**  
of the province of Antwerp  
regarding the **Nuclear**  
**Power Plant (NPP)** of Doel.



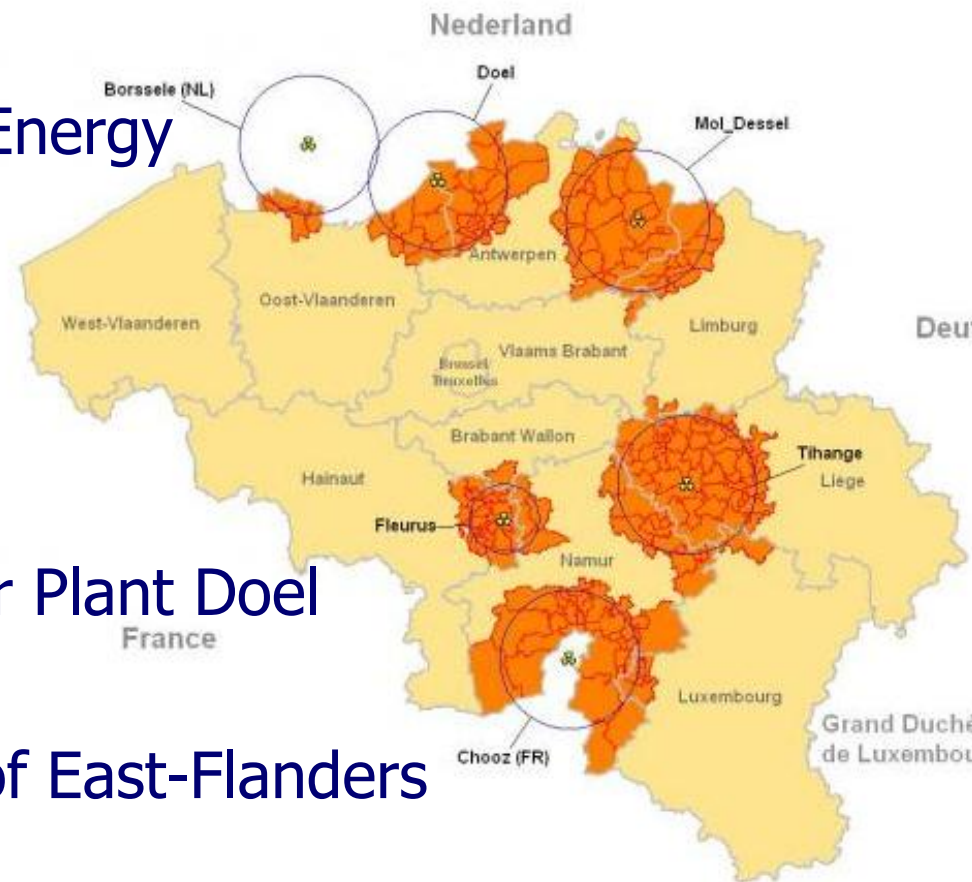
# Nuclear risks Province of Antwerp

## ■ Nuclear installations region Mol-Dessel

- Study Centre for Nuclear Energy
- Belgonucleaire
- FBFC
- IRMM

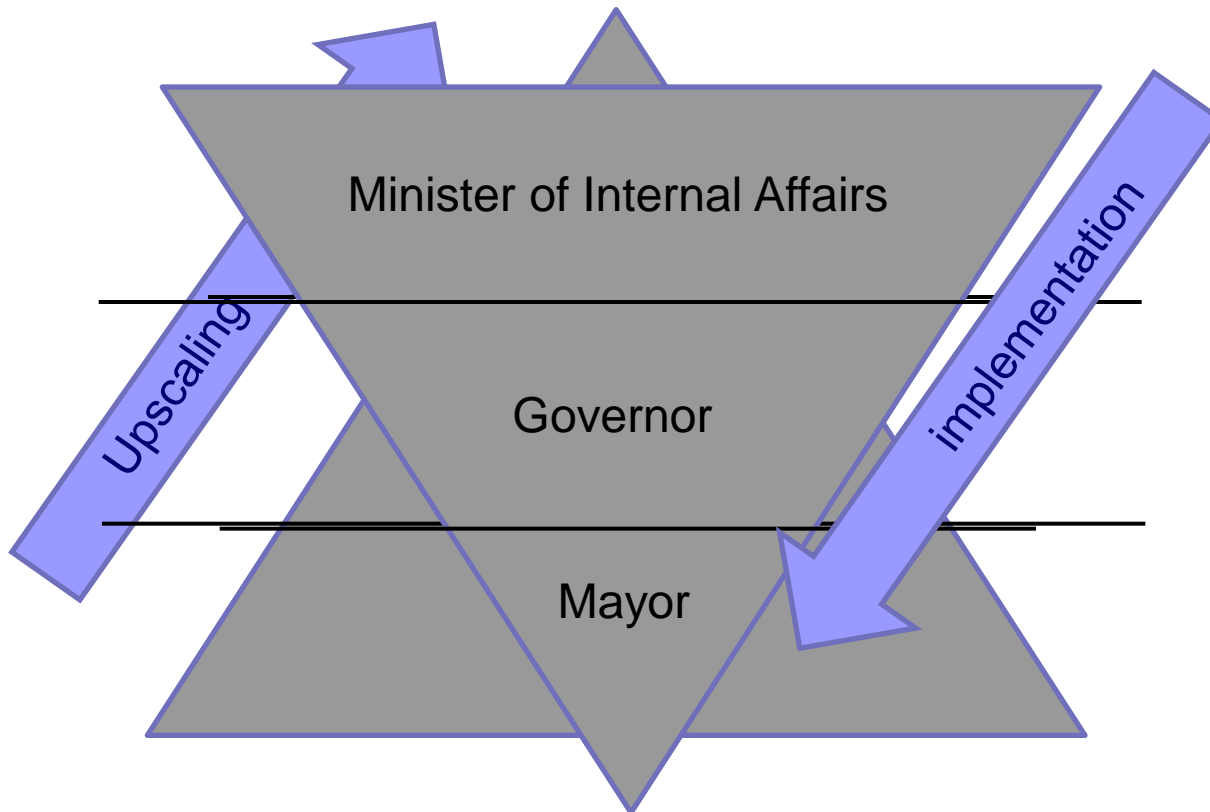
## ■ Effects area of Nuclear Power Plant Doel

- territory of the province of East-Flanders



# Emergency management

- Traditional emergencies
- Nuclear emergencies



# Authorities and their competences

## ■ **Minister of Internal Affairs**

- Evaluation of the radiological situation
- Decision-making about protective measures that need to be taken
- National Nuclear Emergency Plan (KB 17/10/2003)

## ■ **Governor + mayor(s) concerned**

- Execution of the decided protective measures
- Coordination of the effective response operations in the field
- Special Emergency and Intervention Plan

# Special Emergency and Intervention Plan (BNIP) - Nuclear power plant Doel

- **New version** of the Special Emergency and Intervention Plan (BNIP) **approved** by the Minister of Internal Affairs (4th of April 2014)
- Full alignment with the BNIP of the province of East-Flanders
  - > future: **1 combined BNIP**
- Most **important changes**:
  - New division of the intervention zone shared on all levels → “Common Operational Picture”;
  - Adjustment of the warning procedure > warning exercises in November 2014;
  - Insertion of new guidelines concerning the protection of personnel engaged in an intervention;
  - Integration with the safety website OSR as well as with the cartography.

# Emergency planning zone NPP Doel

- **Port Area Antwerp** (city of Antwerp + Zwijndrecht)
  - 35 Seveso companies (30 high threshold, 5 low threshold)
  - Largest petrochemical cluster in Europe
  - ± 65.000 direct employees (+ indirect employees like lorry drivers... total of ± 150.000)
  - Modes of transport: shipping, railroads, highways, pipelines

- **Residential areas:**

- Impact upon 15 municipalities :
  - > 600.000 residents
- Collectivities: hospitals, schools, rest homes, prison,...

MEASURES	DISTANCE
Sheltering	10 km
Evacuation	10 km
Stable iodine administration	20 km

Communication, warning procedures and alarming neighbouring municipalities (or countries) across the border in case of an incident

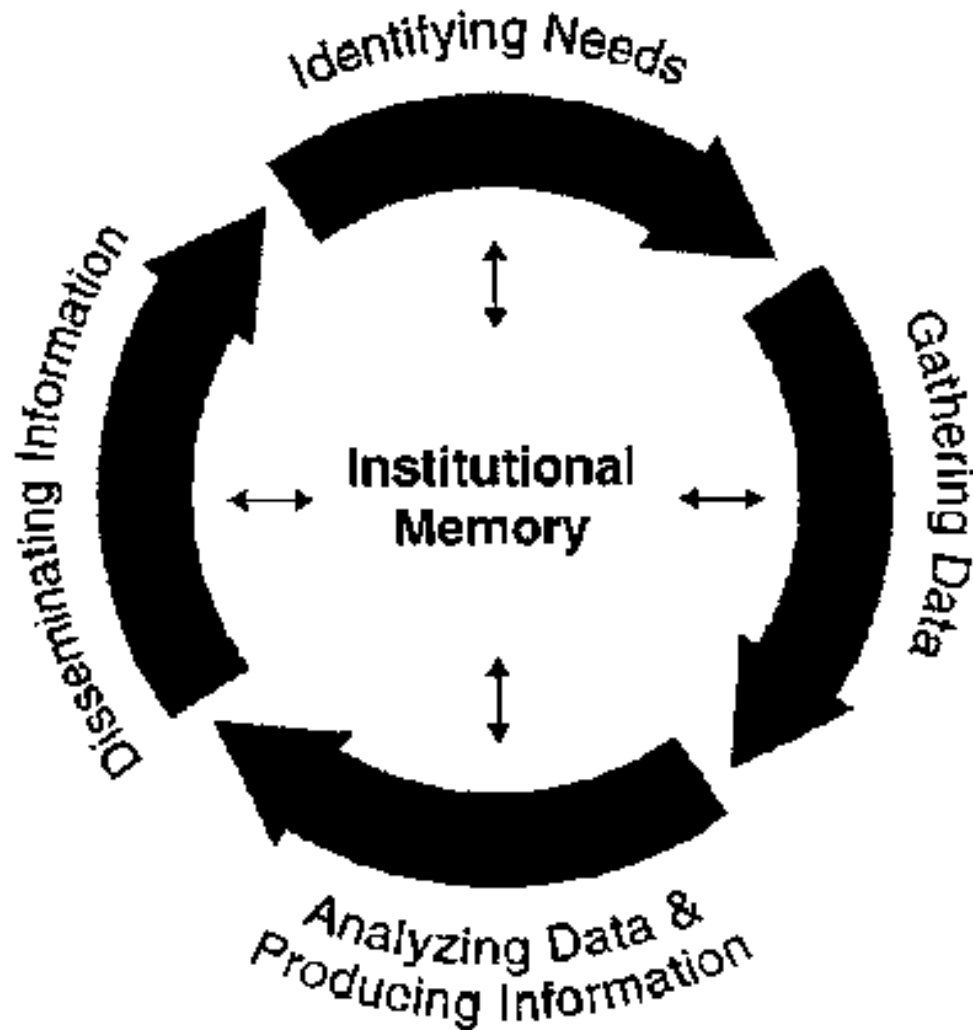
- **Contacts** between Belgium and the Netherlands on **national level**, but not on the level of the Provincial Special Emergency and Intervention Plan
- **Exchange of emergency plans**, integrated in the warning procedures
- **Representative present at Provincial Coordination Committee** → Protocol on Cross-border Cooperation
- Extensive exercise in 2009: **the fine-tuning of the agreements**: testing of the warning procedures



# Exercise NPP Doel 2013: items for improvement

- **Information flow** as well as **internal communication** between federal (national) and local level
  - integration of **information management** into crisis management
- **Communication** towards **population**
- **Feasibility and practicability** of taken measures, mainly with regards to evacuation
  - procedure '**large-scale evacuation**'

# Information Management





# Large-scale evacuation: focal points

- Alarming/warning (communication + info)
- Mobility (transport + controlling traffic)
- Decontamination
- Organising accommodation, care, support
- Postcare (return of the population)

# Conclusion

- Development and implementation of a nuclear emergency plan in an industrialised and urbanised area is difficult. However, through **strong and open collaboration**, we try to **anticipate** in the best possible way.
- In the future, we will further **enhance and improve the cross-border and international collaboration** on all levels of nuclear emergency planning.
- Being well prepared means **practicing – practicing – practicing!**